

## Overview of Proposed Marathon and Sprint Courses

The 2021 USCA National Canoe and Kayak Marathon Championships on the Allegheny River here in Warren County, PA.

As with all previous running's of this event in Warren the marathon course will begin at the tailwaters of the Kinzua Dam located along Route 59 approximately 9 miles east of the City of Warren. The start line will be situated at a Corps. of Engineers boat launch with ample river accessibility both upstream and downstream of the start line. Adequate warm up area exists between the start line and the dam restriction area to allow for pre-race warm up paddling.

The 2021 adult marathon course will cover approximately 12.5 miles of the Allegheny River between the Kinzua Dam and Betts Park in Warren, PA. Two upstream portions will be included, one in Shipmen's Eddie and is approximately .5 miles in length and the other within the City of Warren utilizing railroad and roadway bridges as turn demarcation points. This section, approximately .5 mile in length, has been utilized in all prior Nationals in Warren and provides excellent spectator viewing opportunities as well as challenging upstream paddling for competitors.

One section of rough water is involved on this course, adjacent to the United Refining Company. This section is approximately 100 yards long and will be actively monitored by Glade Volunteer Swift-water rescue squad.

Management of the water level for the 2021 Nationals will again be coordinated with the U.S. Army Corps of Engineers. While weather conditions will dictate the Corps ability to provide additional discharge through the dam or restrict such discharge to reach optimum race conditions along the course we have experienced in the past and have every confidence that we will again receive the utmost in cooperation from the Corps in meeting the needs of the USCA for all 3 marathon days.

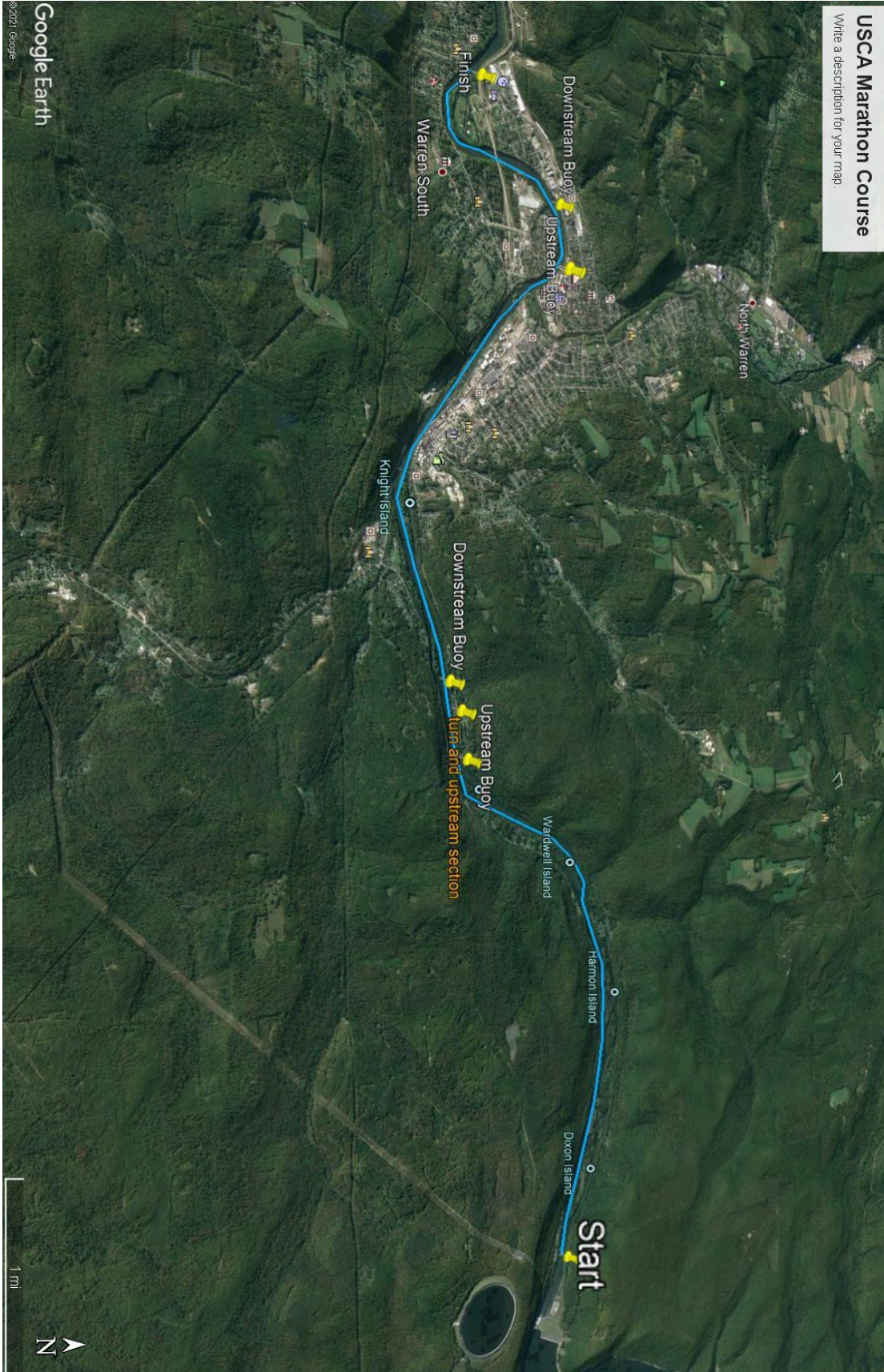
The marathon course for the Youth divisions will start at the tailwaters at the Kinzua Dam and will run to Betts Park in Warren. Youth paddlers will run a straight course and not complete the upstream portions of the course.

The Sprint competitions will be held on Chapman Lake located within Chapman State Park. The lake offers flat water for the competition and easily accessible viewing areas. The park has ample amounts of parking and easy access for paddlers to get in and out of the water.

# USCA MARATHON COURSE

USCA Marathon Course

Write a description for your map.



Google Earth

© 2021 Google



# SHIPMAN'S EDDIE TURN

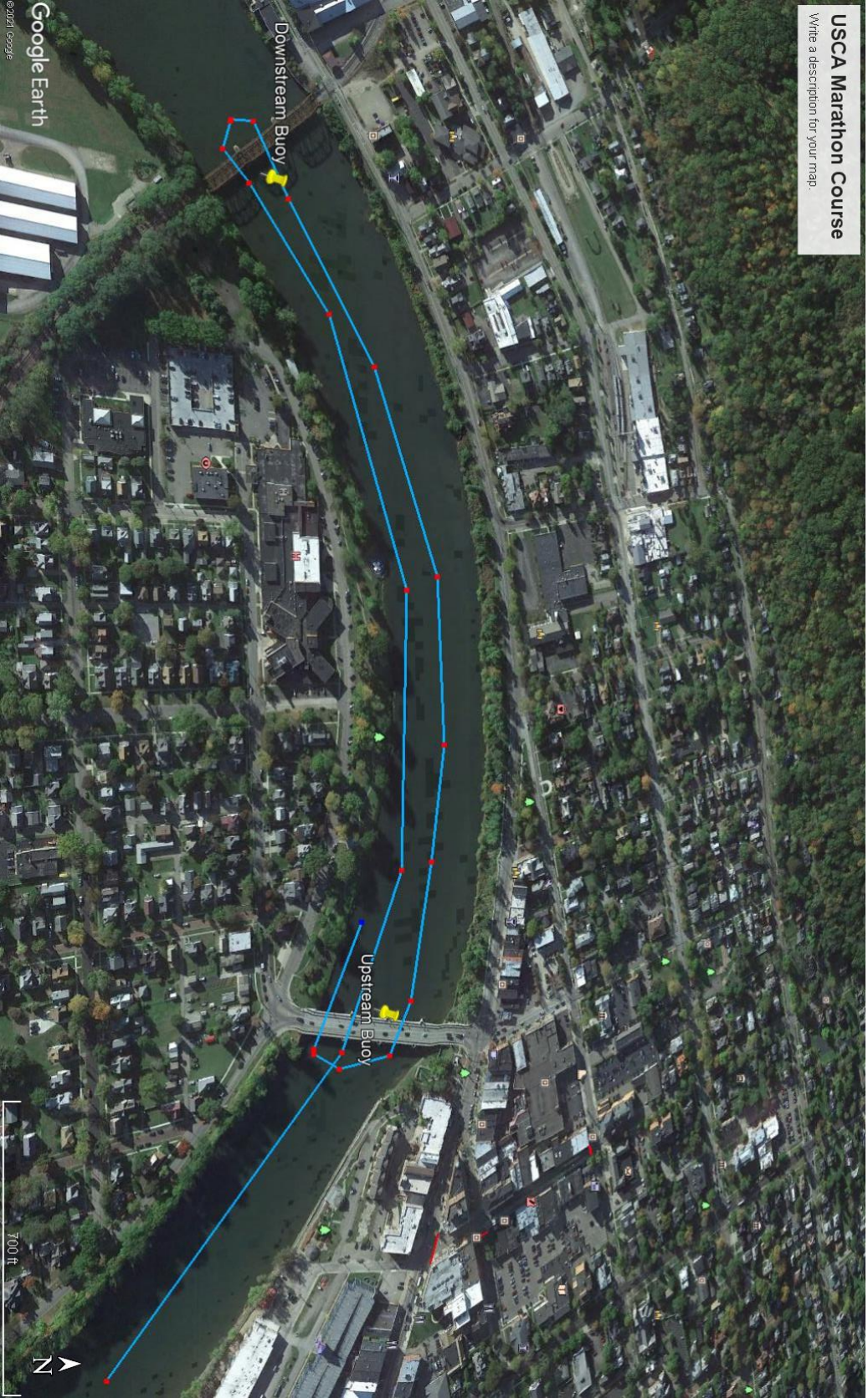
USCA Marathon Course  
Write a description for your map.





# DOWNTOWN TURN

**USCA Marathon Course**  
Write a description for your map.



Google Earth  
©2021 Google

700 ft

